



HARD FOLDING TONNEAU COVER INSTALLATION GUIDE

3441GB OCT/2011	GUIDE FOR FOLD-A-COVER®: FD3631, FD3632	TRUCK MODEL(S): 2009 FORD F-150 8' Box and 6'6" Box
---------------------------	--	--

NOTES TO INSTALLER:

- Install Parts as shown in illustrations.
- Temperature should be no lower than 70° F when installing.
- Be sure the truck is setting on a level surface.
- Apply lock tight to each fastener during installation.
- **Some trimming of bed liner may be required for proper fit and function.**
- Make sure the end user receives the warranty registration envelope, keys, and the operation instructions.



* Truck model shown in images may or may not represent the truck referred to in this installation guide.

NOTES TO CUSTOMER:

- For proper use and maintenance, refer to the operation and care label located on the underside of the rearmost panel on cover (driver's side).

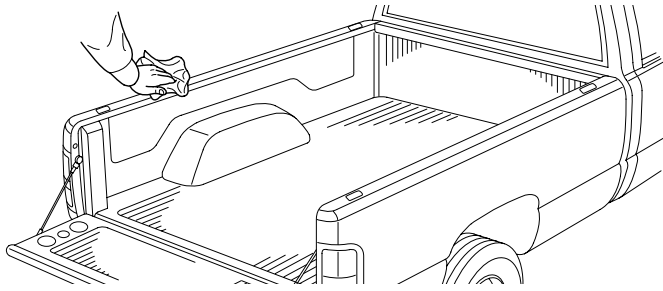
Fold-a-Cover® is a product of Steffens Automotive, Inc
4045 Karona Court, Caledonia, MI 49316
phone: (616) 656.6886 fax: (616) 656.3771
www.steffensautomotive.com



HARD FOLDING TONNEAU COVER INSTALLATION GUIDE

PRE-INSTALLATION NOTICE:

SURFACE PREPARATION



WIPED OWN BOTH SIDE RAILS

Using a clean cloth and 70% Isopropyl Alcohol, wipe down both side rails to ensure a clean surface for installation.

STEP ONE:

PREPARE FOR WIND SEAL RAIL INSTALLATION



REMOVE STAKE POCKET COVERS:

Using a pick or small screwdriver, remove the plastic covers from all stake pocket locations.

NOTE: There are four (4) covers on 6'6" boxes.
There are six (6) covers on 8' boxes.

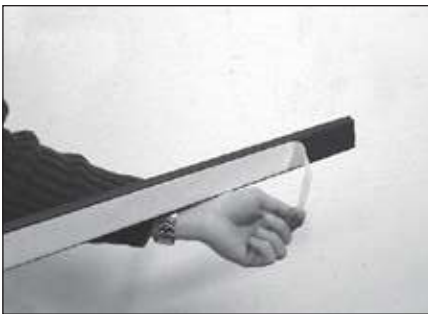


PLACE SPACER BLOCKS:

Remove backer from plastic spacer bloxk (P) to expose adhesive. Place spacer block with adhesive side down at the front and rear of each stake pocket opening. It will fit nicely within the notched area of the trim.



This image shows the final result of placing the spacer blocks in a stake pocket opening.

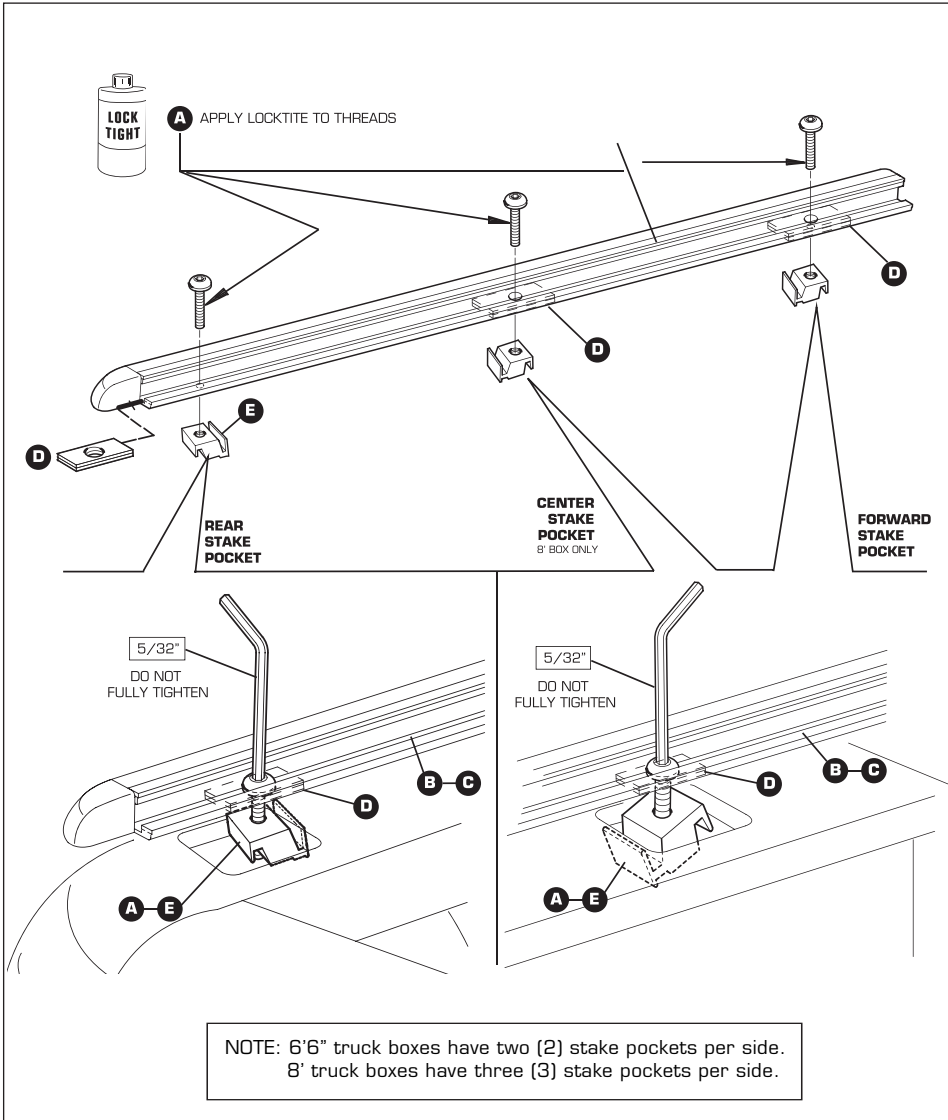


REMOVE PROTECTIVE BACKER FROM WIND SEAL RAILS:

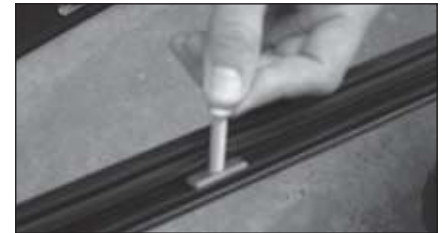
Remove the protective film from the foam tape on both wind seal rails (B & C).

NOTE: The foam tape is for surface protection and moisture sealing. There is no adhesive.

STEP TWO: WIND SEAL (SIDE RAIL) APPLICATION



Insert the support washers (D) into the wind seal rails as pictured above.



Insert the 1 3/4" socket head bolts (A) through the support washer and through the slotted hole in the wind seal rail.

NOTE: Using your thumb, hold the upper and lower rubber seals out of the way as you insert the bolt through the spacer and wind seal rail.



Thread the stake pocket nuts (E) onto the bolts for approximately five turns.

NOTE: The deep groove in the stake pocket nut should face up toward the bottom of the wind seal rail as shown in the illustrations.



SECURE WIND SEAL RAIL TO VEHICLE:

Align the completed wind seal rail assembly on the top of the truck box, as seen in the images above, allowing the stake pocket bolts and nuts to drop into their respective stake pockets. Starting at the forward stake pocket on the driver's side of the vehicle, make sure the stake pocket nut engages the stake pocket lip and hold a slight upward pressure on the rail.

Using a 5/32" inch allen wrench, tighten the socket head bolt until the rail draws down and makes slight contact with the top of the truck box. Tighten it only finger tight.

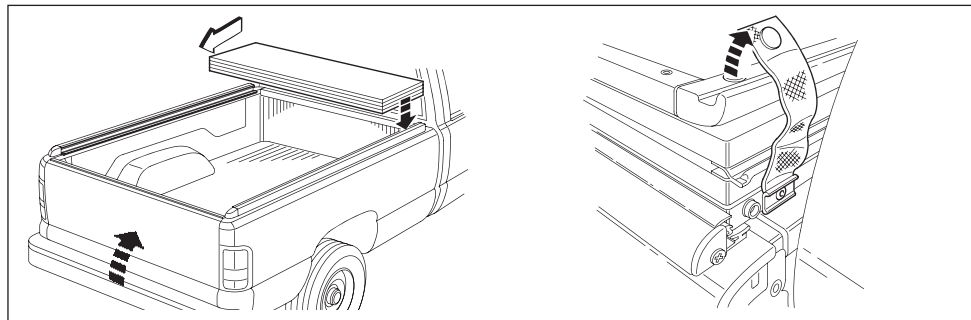
Repeat these steps until all of the stake pocket nuts are finger tight on both the drivers and passengers side wind seal rails.

HARD FOLDING TONNEAU COVER INSTALLATION GUIDE

STEP THREE:

INITIAL COVER PLACEMENT

NOTICE: Assistance may be required to perform this step

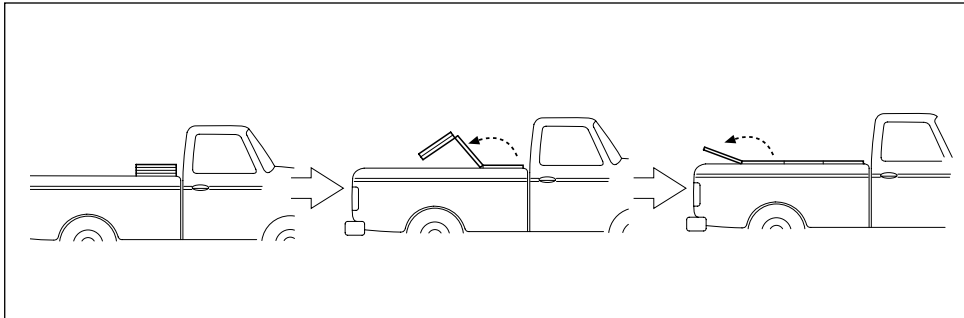


PLACE COVER BETWEEN WIND SEAL RAILS:
Carefully remove the folded cover from the shipping box and remove packing materials from the corners of the cover.

Place the cover between the wind seal rails and release the three snap restraints as shown in the diagram and pictures above.

Pictured: Detaching a snap restraint from the cover.

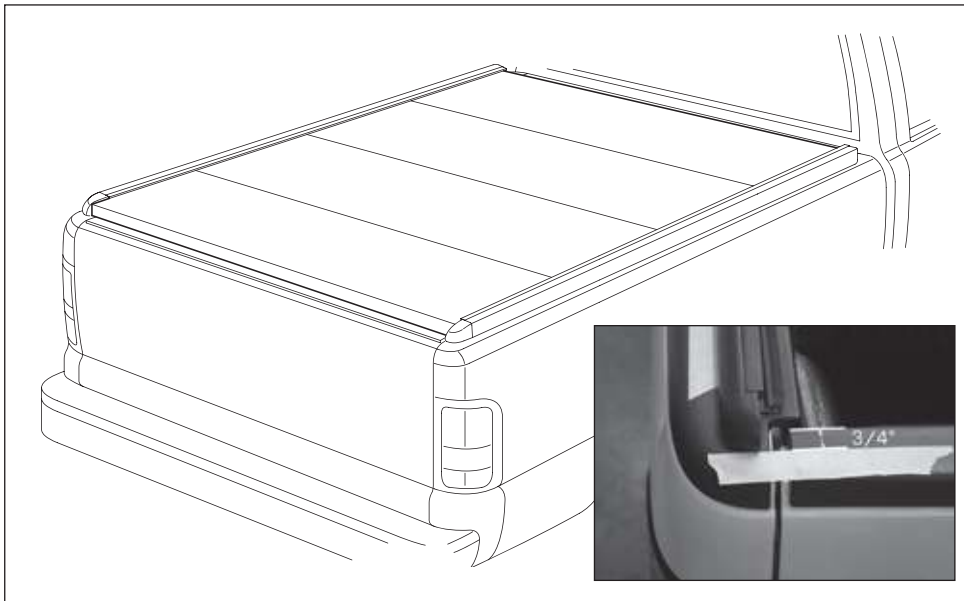
NOTE: Retain two of the foam corner blocks for Step Eleven.



CAREFULLY UNFOLD COVER:
Unfold the cover between the wind seal rails on the truck bed.

It may be necessary to adjust the wind seal rails for the cover to fold out flat and sit between the wind seal rails.

Pictured: Unfolding cover between wind seal rails.



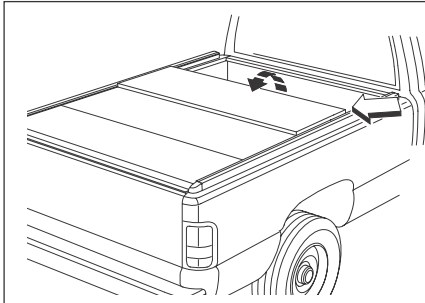
ADJUST PLACEMENT OF COVER:
Adjust the front-to-rear placement of the cover so that the rear panel of the cover is 3/4" inch onto the closed tailgate. See inset picture above.

Also center the cover evenly and squarely from side-to-side on the truck bed.

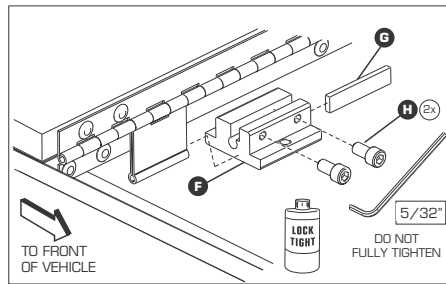


ALIGN WIND SEAL RAILS TO THE COVER:
Make sure the upper rubber seal of the wind seal rails are evenly spaced 1/32" to 1/16" from the top edge of the cover for the entire length of the cover, front-to-back and on both sides. Also align the rear of the wind seal rails with the rear panel of the cover on both sides.

STEP FOUR: SECURE COVER TO TRUCK BED



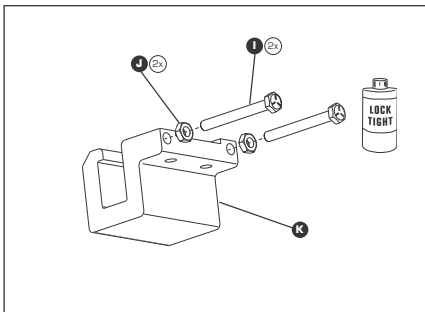
FOLD BACK FRONT PANEL:
Carefully fold back the front panel.
Note: Make sure cover does not move from its centered position on the truck bed.



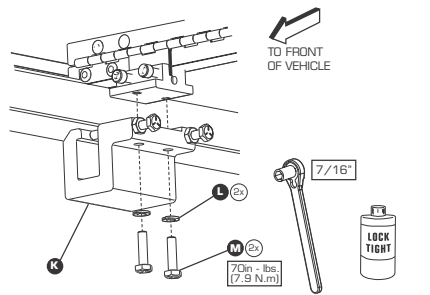
ASSEMBLE HINGE BRACKET:
Assemble drivers side and passengers side hinge brackets (F, G & H) finger tight as shown in the diagram and picture above.



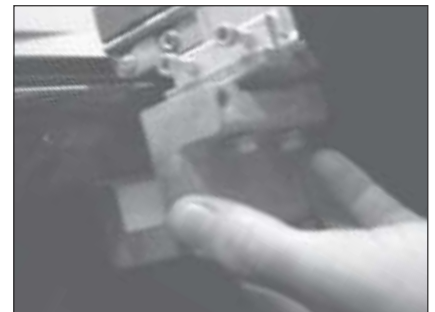
Pictured: Attaching Hinge Bracket to Cover.



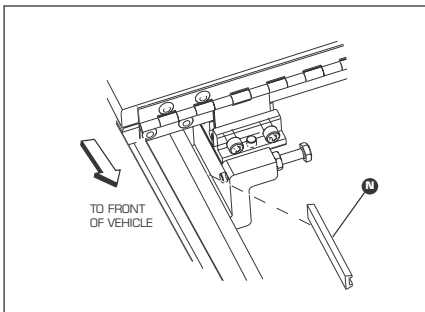
PREPARE C-CLAMP ASSEMBLY:
Assemble drivers side and passenger side C-Clamp units (I, J, & K). Thread the jam nut (J) all the way onto bolt (I) and thread them into C-Clamp (K) as shown in diagram above.



ATTACH C-CLAMP TO HINGE BRACKET:
Using bolts (M) attach the C-Clamp units to the hinge brackets and tighten the bolts to 70 in. lbs. (7.9 N. m.).

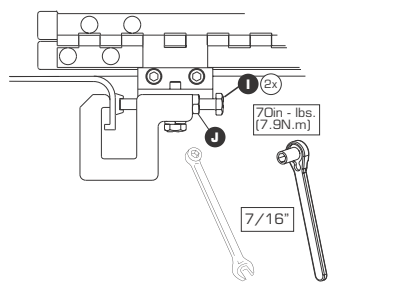


Pictured: Attaching C-Clamp to truck bed and Hinge Clamp.



INSERT C-CLAMP SHIM:
Insert the C-Clamp shims (N) as shown in the diagrams above and thread the C-Clamp bolts in finger tight until the bolt contacts the center groove in the shim.

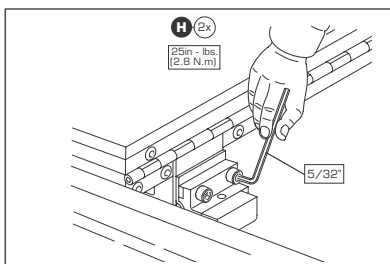
Note: Make sure both of the C-Clamp bolts contact the shim and that the C-Clamp assembly and shim are parallel with the top of the truck bed. Avoid any downward pressure on the C-clamp assemblies as they are tightened.



TIGHTEN BOLTS AND JAM NUTS:
Check the shim alignment and tighten the bolts to 70 in. lbs. (7.9 N. m) and then tighten the jam nuts.



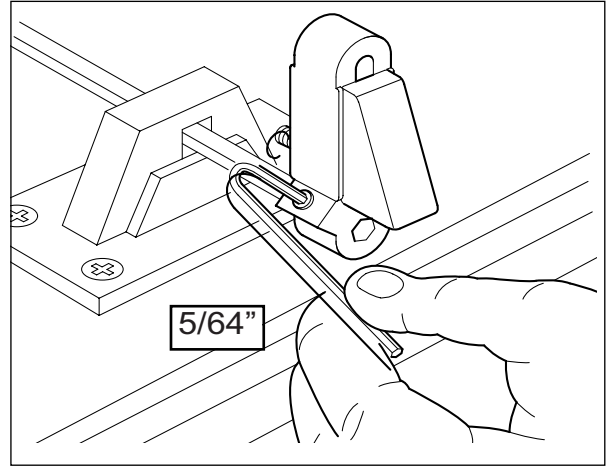
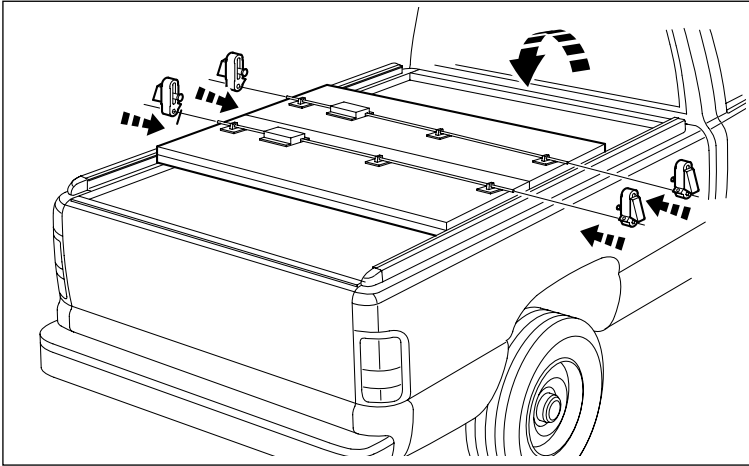
Pictured: Securing C-Clamp jam nut with 7/16" wrench.



SECURE HINGE BRACKET BOLTS:
Tighten hinge bracket set bolts to 25 in. lbs. (2.8 N. m.)
Note: Make sure hinge bracket shim (G) is seated to the bottom of the receiver groove in the hinge bracket.

STEP FIVE:

INSTALL LATCHES



With the front & rear panels still in their fully open positions, install the Catch Post (Q) to the ends of the rods on the end panels. Position the catch so body is away from the panel as shown in picture above. Slip the hole over the hex rod until flush. Use 5/64" allen wrench to tighten.

STEP SIX:

ADJUST LATCHES



Rear Catch Post Adjustment:

The Catch Post should touch the truck bed as shown in the picture above when the panel is completely closed. Contact should only be on the bottom and not the side surface.

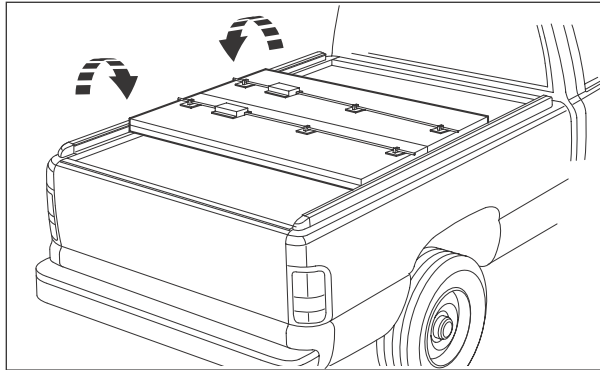
If the Catch Post should not touch the truck bed, use a 5/16 socket to adjust vertical position of the Catch Post so that it is touching on the bottom surface.

STEP SEVEN:

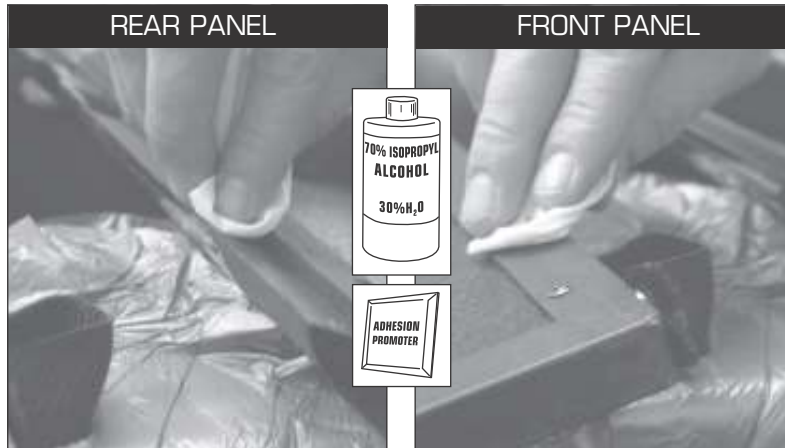
ATTACH FRONT & REAR BLADE SEALS

SURFACE TEMP
70°F
OR ABOVE

Surface temperatures below 70 degrees F will adversely effect the bond strength of the seal adhesive.



NOTE: Use 2 foam corner packing blocks to support the open front & rear panels of the cover as shown.

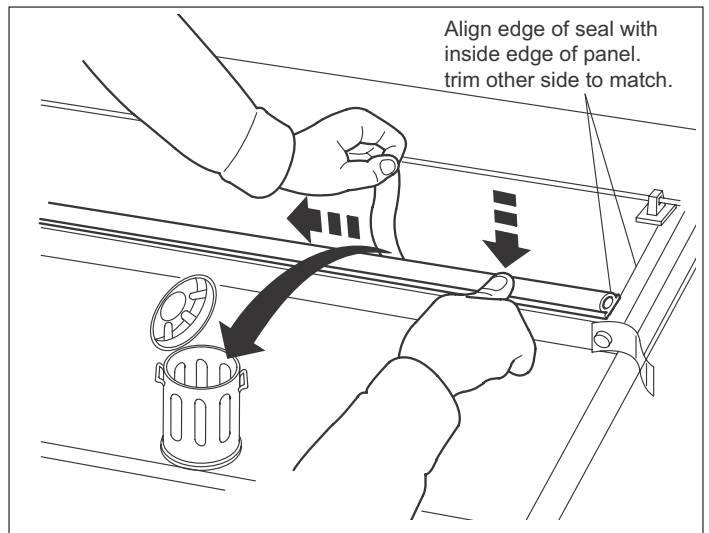
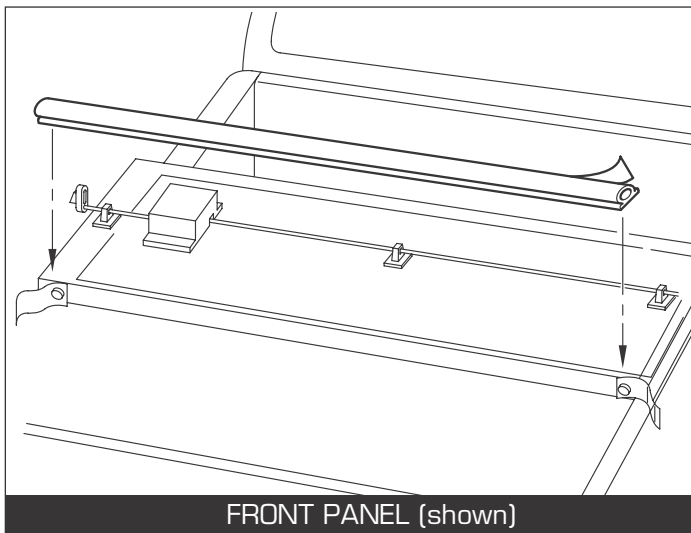


CLEAN SURFACES

With the front and rear panels open and supported on the foam packing blocks; clean the seal surfaces with 70% isopropyl alcohol.

NOTE: Surface must be free of dust, dirt, oil and moisture. Make sure to clean the seal mating surfaces with either isopropyl or denatured alcohol as these solvents leave no residue that could effect the bond strength.

Apply the adhesion promoter (G) to both panels as shown in fig. 1. Allow the adhesion promoter to dry to the touch before starting the bulb seal installation.



INSTALL REAR PANEL BULB SEAL

With the rear panel still in its fully open position, install the smaller Bulb Seal (T) to the rear panel. Align the end of the seal to the inside edge of the panel. Trim the other side to match.

INSTALL FRONT PANEL BULB SEAL

With the front panel still in its fully open position, install the larger Bulb Seal (S) to the front panel. Align the end of the seal to the inside edge of the panel. Trim the other side to match.



To open the cover lift the latch release handle and open the rear panel to the fully open position.



To insure proper operation of the center latch mechanism always open and fold the rear panel of the cover to its fully open position before starting any folding motion of the second or third panels.



Continue the opening sequence by folding the second and third panel to the fully open position.



With the cover in the fully open and stacked position secure all three docking straps. It is important to secure the docking straps at all times when the cover is in the fully open position.



To close the cover, reverse these steps in the same order, making sure to close the rear panel last.

Note: Only operate the vehicle with the cover in the closed and latched position or the fully open position with the docking straps securely fastened. Operation of the vehicle with the cover in partially opened positions can cause severe damage to the cover and possibly the vehicle.